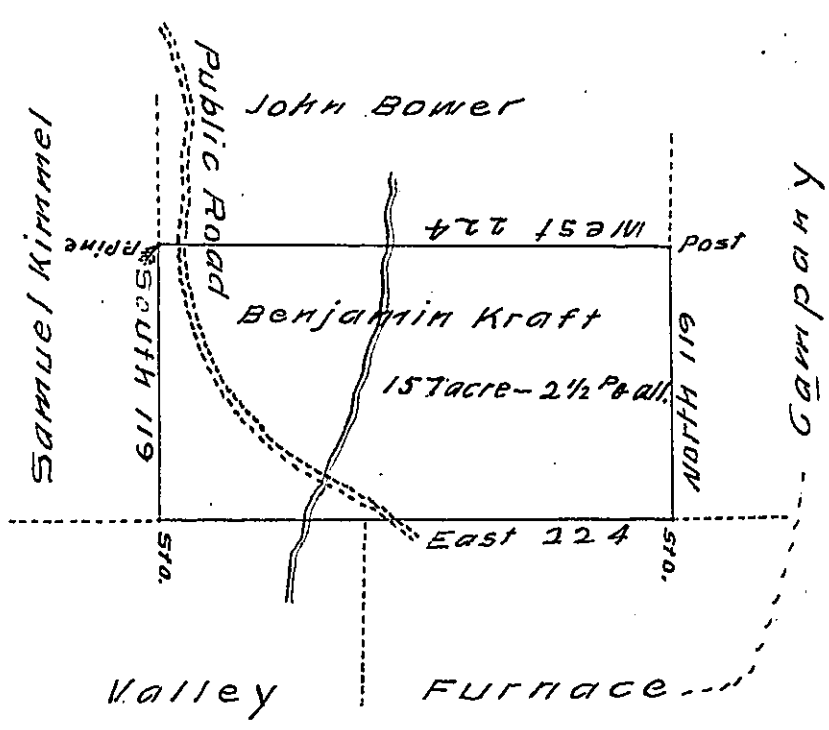


FORM NO 1.



Situate in Schuylkill Township Schuylkill County containing one hundred and fifty seven acres two and a half perches and the allowance of six per cent for Roads. Surveyed unto Benjamin Kraft the 7th day of January 1830 by virtue of a warrant granted him dated the 2d day of January 1830., By

George Reber D.S.

To Gabriel Hiester Esquire
Surveyor General of Pennsy^a

IN TESTIMONY that the above is a copy of the original remaining on file in the Department of Internal Affairs of Pennsylvania, made conformably to an Act of Assembly approved the 16th day of February, 1833, I have hereunto set my Hand and caused the Seal of said Department to be affixed at Harrisburg, this Eighteenth day of January 1908

Henry Houch
Secretary of Internal Affairs.